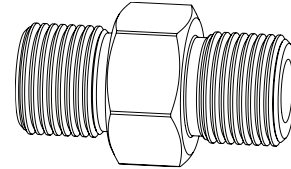


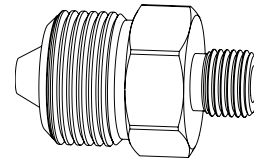
## TYPE M CONNECTORS

PART NO.	CONNECTION TYPE		MAX. OPERATING PRESSURE	
	Connection 1	Connection 2	psi	bar
AF 060-060	9/16 Type M Male	9/16 Type M Male	50,000	3,450
AF 060-062	9/16 Type M Male	7/8 Type M Male	50,000	3,450
AF 062-062	7/8 Type M Male	7/8 Type M Male	50,000	3,450
AF 062-063	7/8 Type M Male	1" Type M Male	50,000	3,450
AF Custom	1-1/8 Type M Male	9/16 Type M Male	50,000	3,450
AF Custom	1-1/8 Type M Male	7/8 Type M Male	50,000	3,450
AF Custom	1-1/8 Type M Male	1-1/8 Type M Male	50,000	3,450



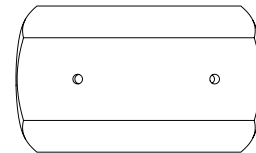
## TYPE M MALE TO HIGH PRESSURE MALE CONNECTORS

PART NO.	CONNECTION TYPE		MAX. OPERATING PRESSURE	
	Connection 1	Connection 2	psi	bar
AF 060-H4	9/16 Type M Male	1/4 HP Male	50,000	3,450
AF 060-H6	9/16 Type M Male	3/8 HP Male	50,000	3,450
AF 060-H9	9/16 Type M Male	9/16 HP Male	50,000	3,450
AF 061-H9	3/4 Type M Male	9/16 HP Male	50,000	3,450
AF 062-H6	7/8 Type M Male	3/8 HP Male	50,000	3,450
AF 062-H9	7/8 Type M Male	9/16 HP Male	50,000	3,450
AF Custom	1-1/8 Type M Male	9/16 HP Male	50,000	3,450



## HIGH PRESSURE STRAIGHT COUPLINGS

PART NO.	CONNECTION TYPE		MAX. OPERATING PRESSURE	
	Connection 1	Connection 2	psi	bar
AF 073-H4	1/4 HP Female	1/4 HP Female	50,000	3,450
AF 073-H4H6	1/4 HP Female	3/8 HP Female	50,000	3,450
AF 073-H4H9	1/4 HP Female	9/16 HP Female	50,000	3,450
AF 073-H6	3/8 HP Female	3/8 HP Female	50,000	3,450
AF 073-H6H9	3/8 HP Female	9/16 HP Female	50,000	3,450
AF 073-H9	9/16 HP Female	9/16 HP Female	50,000	3,450



## WITH COLLAR AND GLANDS

PART NO.	CONNECTION TYPE		MAX. OPERATING PRESSURE	
	Connection 1	Connection 2	psi	bar
AF 173-H4	1/4 HP Female	1/4 HP Female	50,000	3,450
AF 173-H4H6	1/4 HP Female	3/8 HP Female	50,000	3,450
AF 173-H4H9	1/4 HP Female	9/16 HP Female	50,000	3,450
AF 173-H6	3/8 HP Female	3/8 HP Female	50,000	3,450
AF 173-H6H9	3/8 HP Female	9/16 HP Female	50,000	3,450
AF 173-H9	9/16 HP Female	9/16 HP Female	50,000	3,450

